

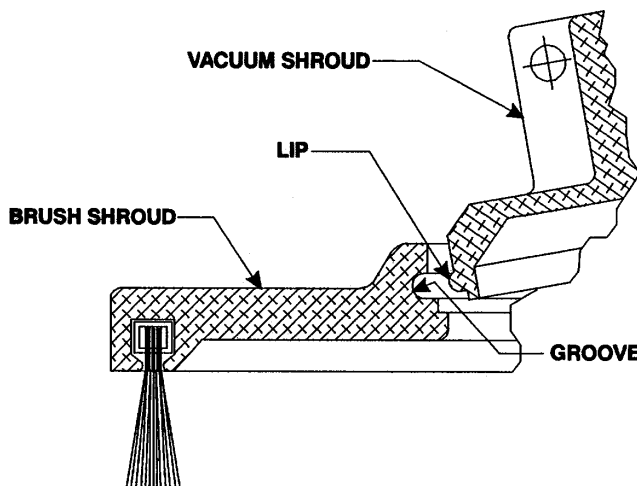


# INSTRUCTIONS FOR NO.872 VACUUM KIT FOR USE ON 1287 AND 1287L SANDERS

Form No. Z272  
Date 1-02/A  
Page 1 of 4

## WARNING! DO NOT USE ON GRINDERS. SERIOUS INJURY COULD RESULT!

1. Install the spindle adapter (65437) on the spindle and torque to 25 ft.-lb.
2. Remove the 4 screws holding the bearing retainer.
3. Remove the spindle lock.  
Note: The spindle lock is not used with the tool in this configuration. The spindle is held with the hex wrench provided when changing sanding discs.
4. Install the shroud adapter (65436) and secure with 4 screws provided (07119).
5. Attach vacuum shroud (65861) to shroud adapter and secure with shroud clamp (65852) and 2 screws (07245). Place outlet tube on shroud at desired position and tighten screws.
6. Install "O" ring (65934) in groove of the vacuum hose adapter (65895) and place the opening with the "O" ring installed over the outlet tube of the vacuum shroud.
7. This kit is shipped without the brush shroud attached to the vacuum shroud. The brush shroud must be attached for proper operation. To attach: Insert one side of the vacuum shroud into the brush shroud, making sure the lip on the vacuum shroud engages the groove in the brush shroud and work the brush shroud around the vacuum shroud until it snaps in place.



8. Place the vacuum hose (874) over the vacuum hose adapter. The spiral wrap (65844) can be used to secure the vacuum hose to the inlet hose.
9. Do not rest tool on the brushes. This will cause them to bend and "Take a set" reducing pick-up efficiency. Store tool on it's back when not in use.
10. Be alert to any fire hazards which may occur, especially in the hose and dust container.
11. Operation of this tool on certain materials and under certain conditions such as low humidity may cause a build up of static electricity in the tool. If this condition exists, attach a ground wire to the inlet cap on the tool and attach the other end to a suitable ground. Also, the factory may be consulted for other grounding methods.
12. This tool must be connected to an external vacuum source, such as a fixed dust collection system or an industrial vacuum system. The tool is equipped with a 1 1/4" diameter vacuum hose.  
The amount of material that is picked up is determined by the power of the vacuum system that is connected to the tool.

# SIoux TOOLS INC.

2901 FLOYD BOULEVARD ■ PO BOX 507 ■ SIOUX CITY, IOWA 51102-0507 USA ■

# PARTS LIST FOR NO.872 VACUUM KIT

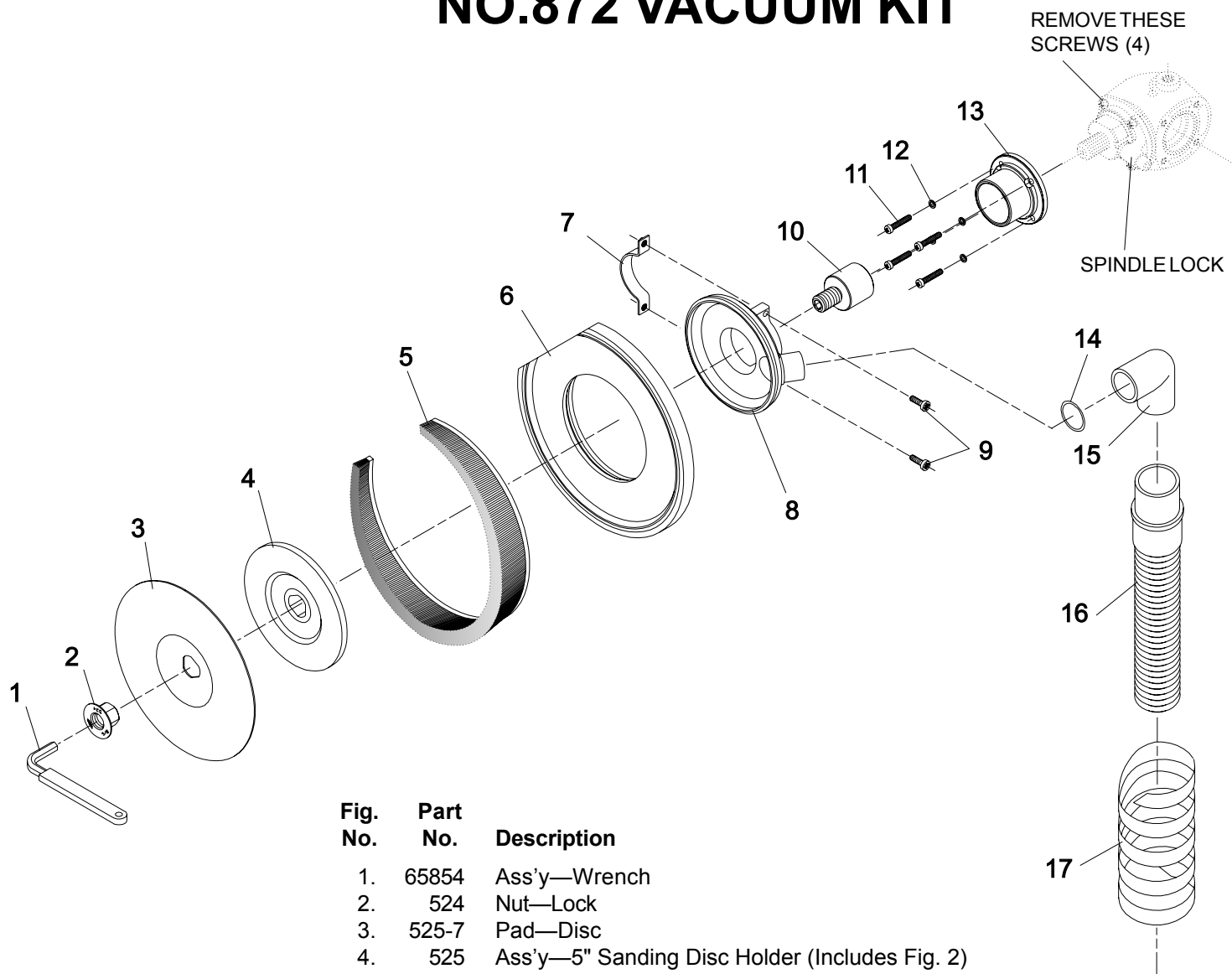


Fig. No.	Part No.	Description
1.	65854	Ass'y—Wrench
2.	524	Nut—Lock
3.	525-7	Pad—Disc
4.	525	Ass'y—5" Sanding Disc Holder (Includes Fig. 2)
5.	65821	Brush—Vacuum Shroud
6.	65820	Shroud—Brush
7.	65852	Ass'y—Clamp
8.	65861	Ass'y—Vacuum Shroud
9.	07245	Screw—Pan Head (Self- tapping)(2)*
10.	65437	Adapter—Spindle
11.	07119	Screw (4)*
12.	09724	Washer—Lock (4)*
13.	65436	Adapter—Shroud
14.	65934	Ring—"O"
15.	65895	Adapter—Vacuum Hose
16.	874	Hose—Vacuum
17.	65844	Wrap—Spiral

Furnish Catalog Number When Ordering Parts

\*Order Quantity As Needed

## This image shows a single sheet of white paper with horizontal ruling lines. The lines are evenly spaced and run across the width of the page. There are no margins, text, or other markings on the paper.



**▲ WARNING**



Some dust created by power sanding, sawing, grinding, drilling, and other construction activities contains chemicals known to cause cancer, birth defects or other reproductive harm.

**▲ ADVERTENCIA**



El polvo generado al lijar, aserrar, afilar, taladrar y realizar otras tareas de construcción contiene sustancias químicas que podrían causar cáncer, malformaciones congénitas y otras alteraciones del aparato reproductor.

**SIoux  
TOOLS INC.**

2901 FLOYD BOULEVARD ■ PO BOX 507 ■ SIOUX CITY, IOWA 51102-0507 USA ■